

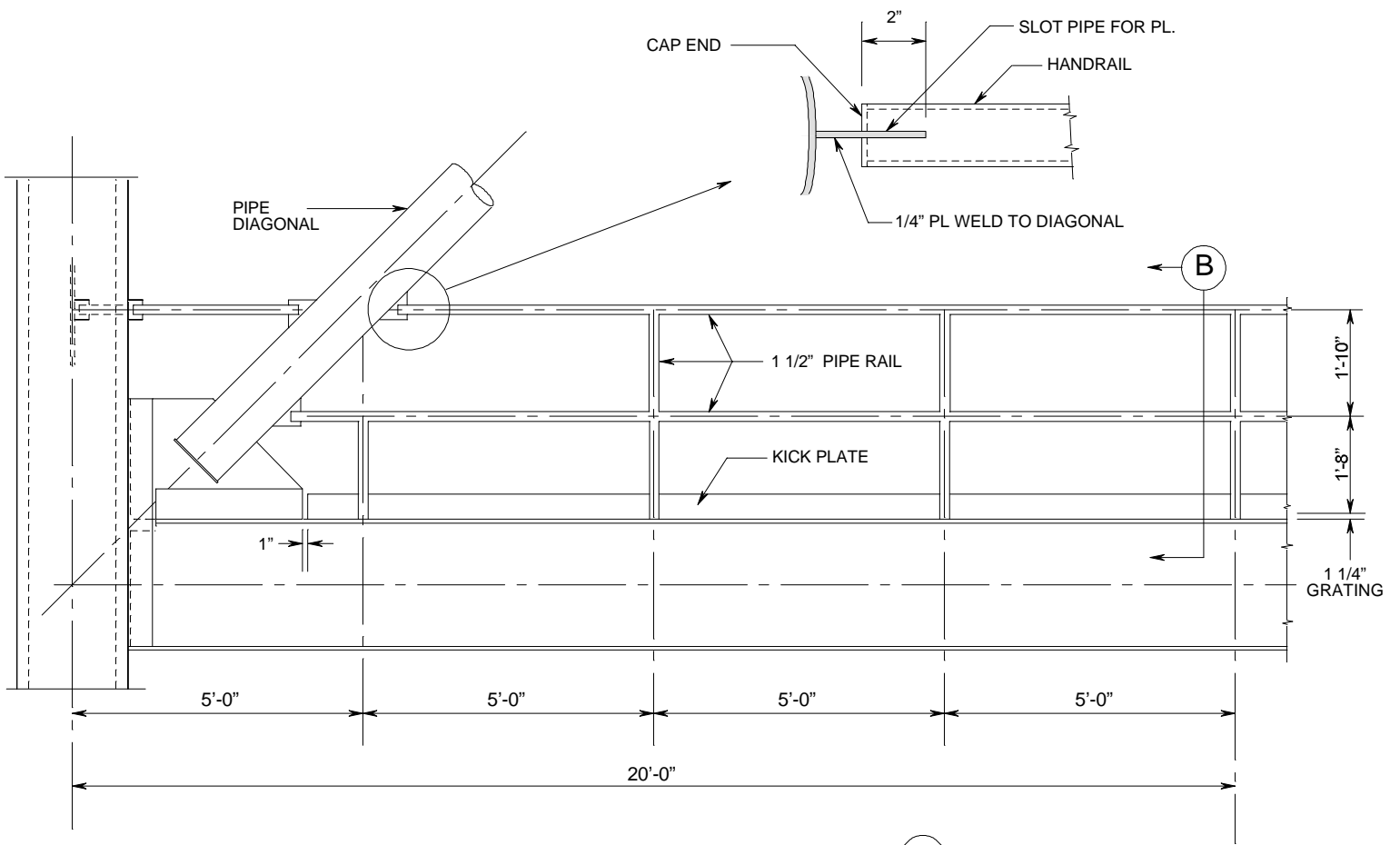
← Indicates Direction of Grating Spans  
All Grating 1 1/4" Thick

LEVEL	CABLE TRAY OPENINGS																					
	A	B	C	D	E	F	G	H	J	K	L	M	N	O	P	Q	R	S	T	U	V	W
60	X	X	X	X	X	X	X	X	X	X	X	X	X	X	X	X	X	X	X	X	X	X
80	X	X	X	X	X	X	X	X	X	X	X	X	X	X	X	X	X	X	X	X	X	X
100		X	X	X	X	X	X	X	X	X	X	X	X	X	X	X	X	X	X	X	X	X
120			X	X	X	X	X	X	X	X	X	X	X	X	X	X	X	X	X	X	X	X
140			X	X	X	X	X	X	X	X	X	X	X	X	X	X	X	X	X	X	X	X
160			X	X	X	X	X	X			X	X	X	X	X	X	X	X	X	X	X	X
180			X	X	X	X	X	X			X	X	X	X	X	X	X	X	X	X	X	X
200			X	X	X	X	X	X	X	X	X	X	X	X	X	X	X	X	X	X	X	X
220			X	X	X	X	X				X	X	X	X	X	X	X	X	X	X	X	X
240			X	X	X	X	X				X	X	X	X	X	X	X	X	X	X	X	X
260			X	X	X	X					X	X	X	X	X	X	X	X	X	X	X	X
280			X	X							X						X	X	X	X	X	X
300			X								X								X	X	X	X
320											X											
340											X											
360																						
380																						

NOTE OPENINGS MARKED "X" TO BE INSTALLED AT LEVEL INDICATED

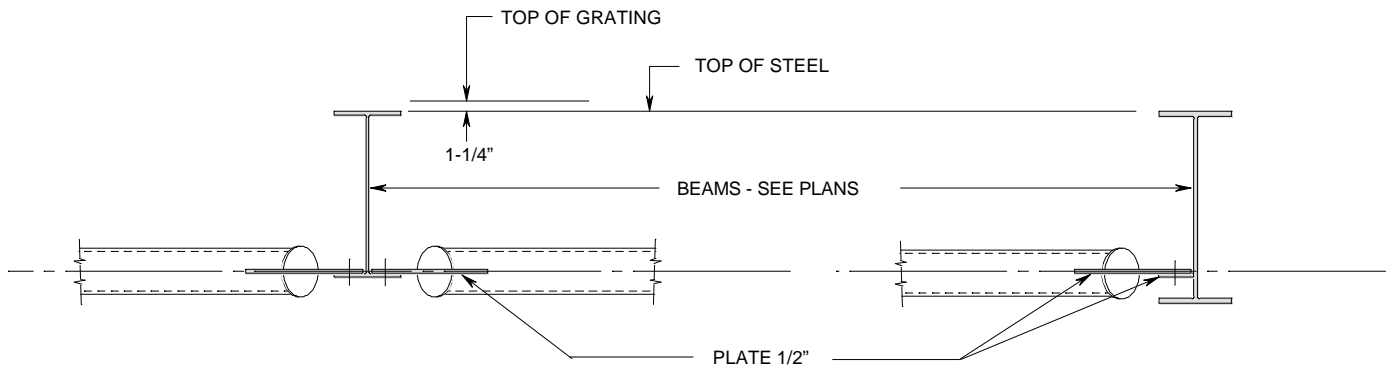
NOTE 1  
CABLE TRAY OPENINGS SHOWN ON PLAN ARE MAXIMUM NUMBER THAT WILL BE INSTALLED ON ANY SINGLE LEVEL. SEE SCHEDULE FOR ACTUAL NUMBER OF OPENINGS TO BE PROVIDED AT EACH LEVEL. ALL OPENINGS REMAIN IN SAME POSITION THROUGH OUT TOWER UNLESS OTHERWISE NOTED. WHERE OPENINGS ARE OMITTED AT ANY LEVEL, FRAMING MEMBERS MARKED (\*6B12 & \*6C8.2) SHALL BE OMITTED IF NOT REQUIRED TO FRAME REMAINING OPENINGS.

Reference Drawings: 75M-05120 Sheet 51  
75M-05120 Sheet 57  
75M-05121 Sheet 137



TYPICAL ELEVATION OF TOWER HANDRAIL  
1/36

(A)

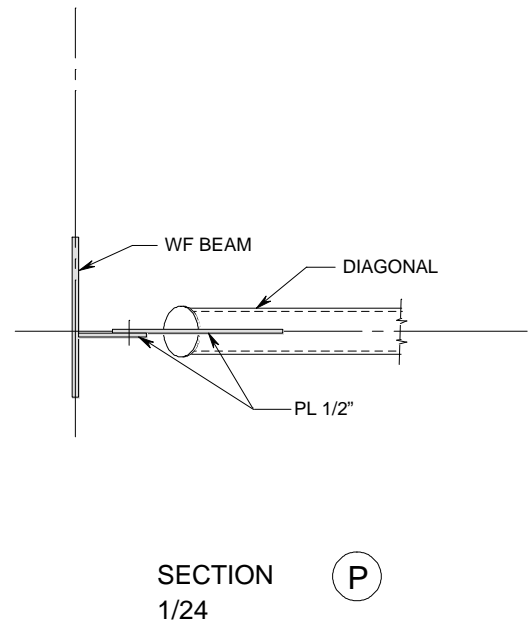
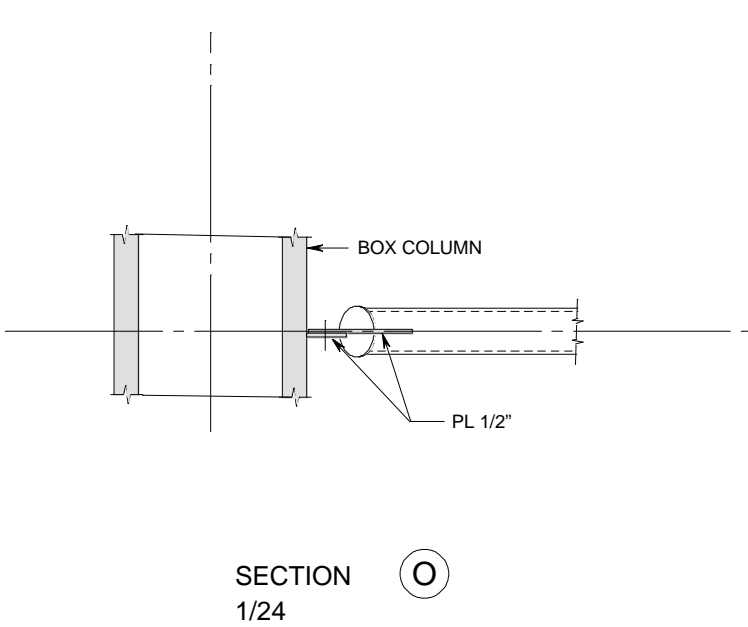
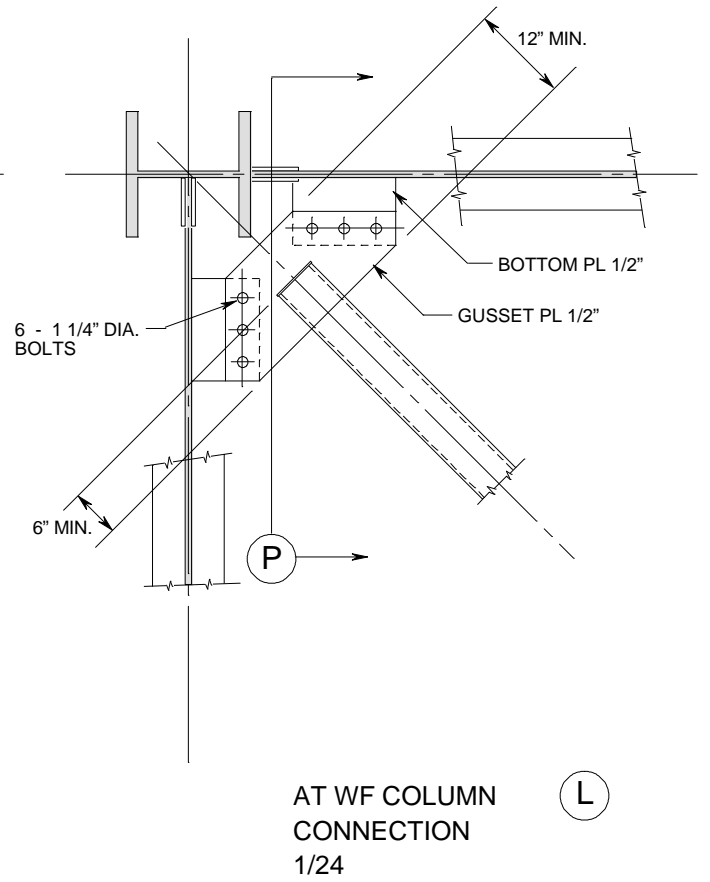
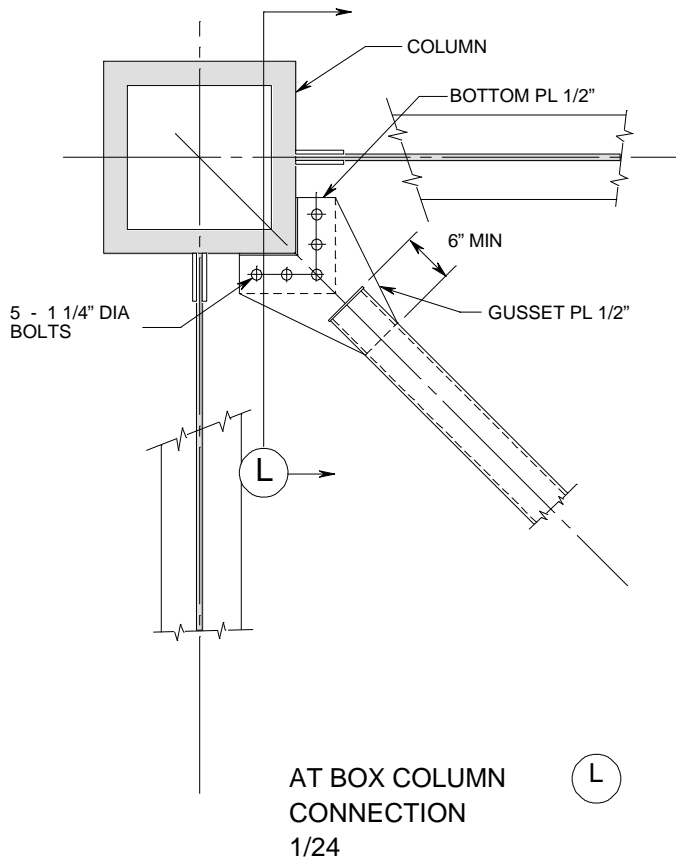


SECTION  
1/24

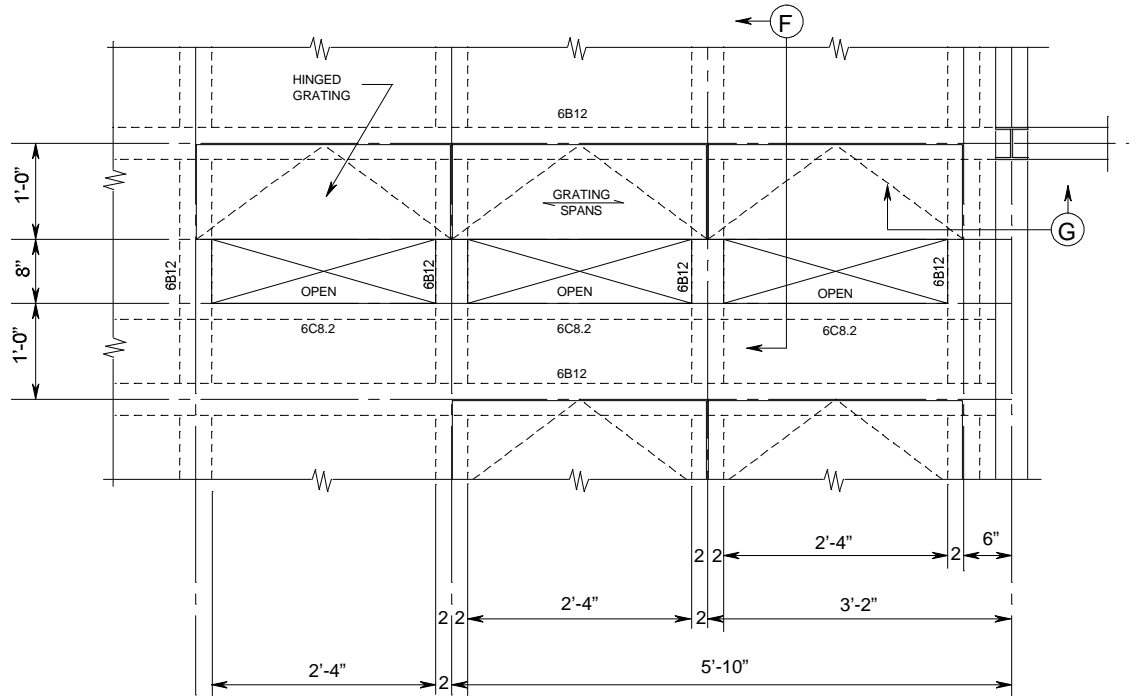
(Q)

SECTION  
1/24

(R)

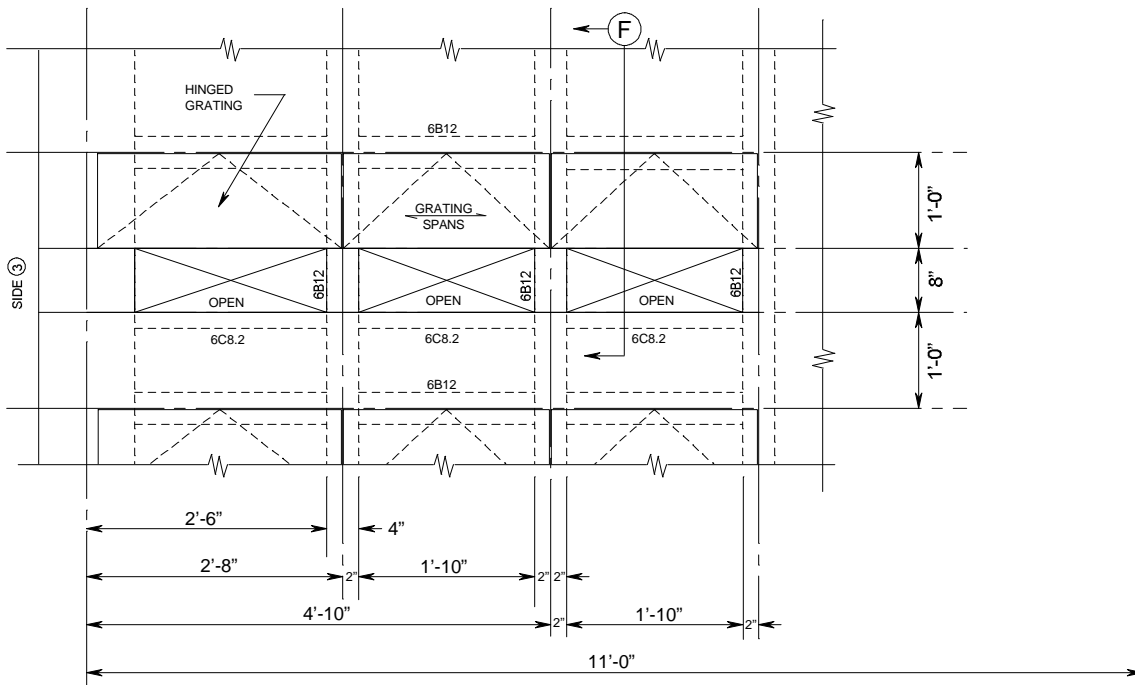


ANCHOR  
TYPICAL  
AT EACH CORNER  
OF HINGED GRATING



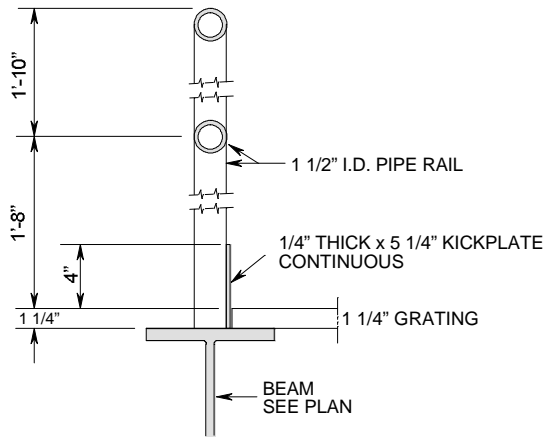
TYPICAL DETAIL OF OPENINGS FOR 24" CABLE TRAYS

ANCHOR



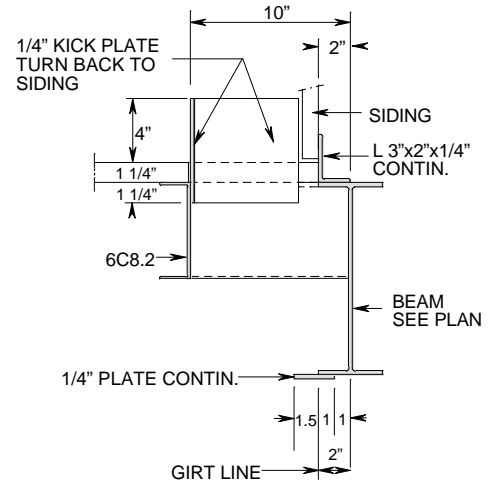
TYPICAL DETAILS OF OPENINGS FOR 18" CABLE TRAYS

1/24



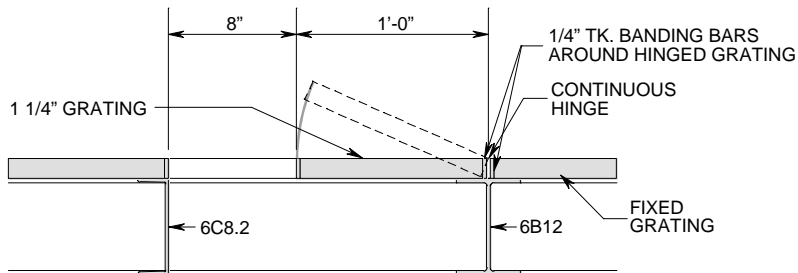
TYPICAL HANDRAIL - SECTION  
1/12

(B)



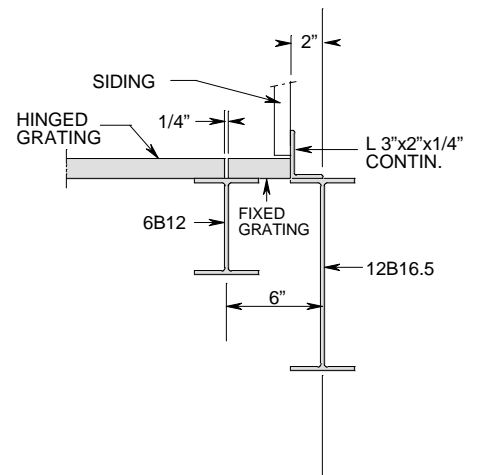
SECTION  
1/12

(C)



SECTION  
1/12

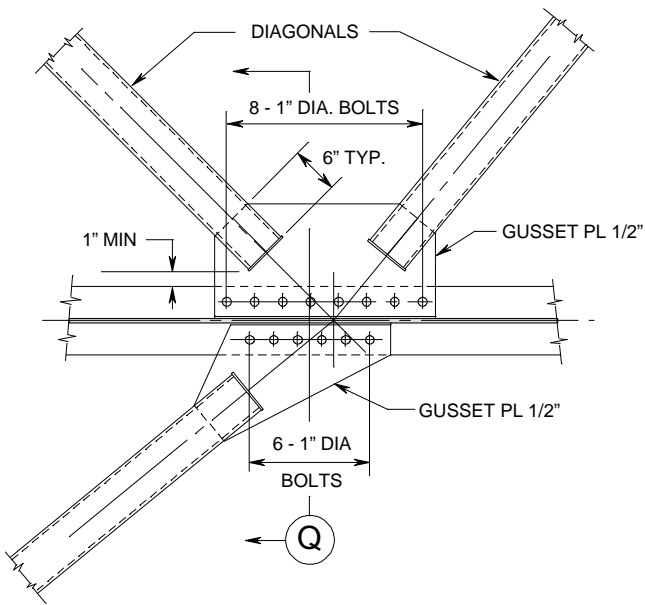
(F)



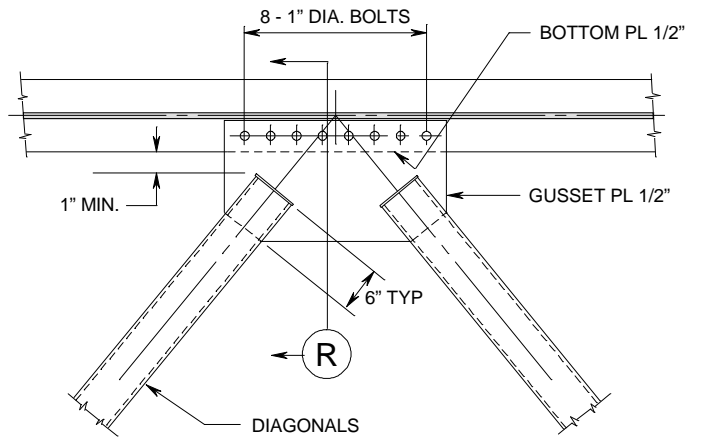
SECTION  
1/12

(G)





CONNECTION M  
1/24



CONNECTION N  
1/24

